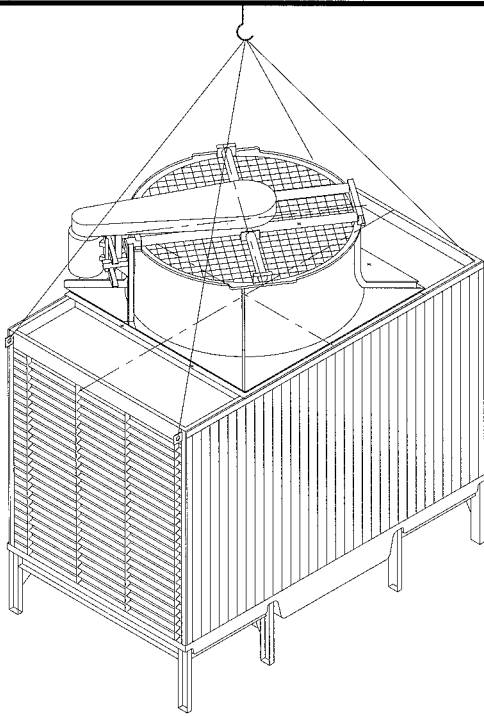


日本スピンドル
NIHON SPINDLE



UK/UKS COOLING TOWER

RIGGING AND ASSEMBLY MANUAL



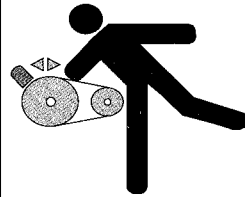
INSPECTION PRIOR TO RIGGING

When the unit is delivered to the job site, it should be checked thoroughly to ensure all items are in good condition and free from any shipping damage. List of parts to be inspected:-

- Exterior Surface
- Fan & Fan Shaft
- Fan Shaft Bearings
- Fan Motor
- Belt Drive System
- Fan Guard
- Water Distribution System
- Heat Transfer Media (Infill)
- Float Valve Assembly
- Strainers
- Louvers
- Drift Eliminators (optional)
- Miscellaneous items: All bolts & nuts, washers, sealers required to assemble section and components of the cooling tower are provided and shipped with the unit. A packing list is included with the shipment.

Cooling tower must be properly anchored in place before operation. Holes suitable for M16 bolts are pre-punched at the beam of leg. (Refer to support drawing for location)

The unit must be level for proper operation. Shim if necessary to level unit.



WARNING

Exposed moving parts can cause severe injury. LOCK OUT POWER before removing guards or performing maintenance.



DANGER

Hazardous voltage will cause severe injury or death. LOCK OUT POWER BEFORE WIRING.



WARNING

The operation, maintenance, service and repair of cooling tower should only be conducted by qualified personal.

All hardwares should be check for tightness before lifting as it may become loose during transit.

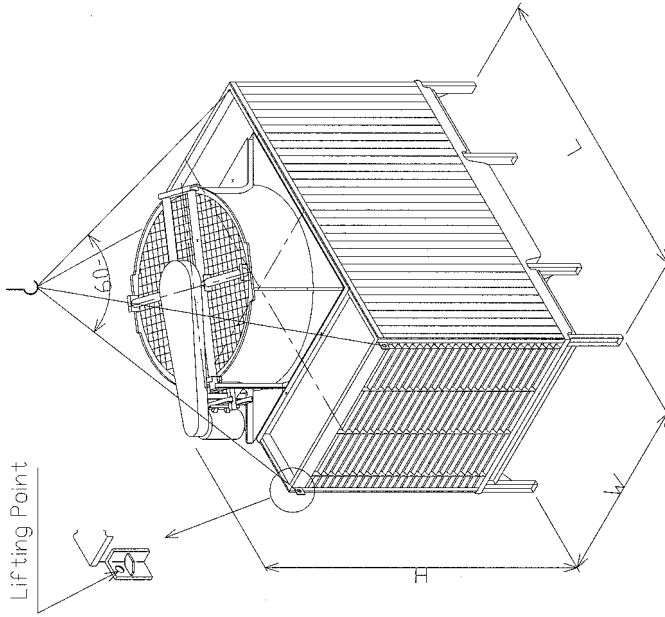
RIGGING DIMENSIONS

MODEL	NO. OF CELL(S)	NO. OF FAN STACK(S)	W	L	H	A	B	C	ASSY. TYPE
UK 80	1	1	1450	3270	2843	1450	1450		1
UK 100	1	1	1850	3470	2843	1850	1850		1
UK 125	1	1	1850	3470	2293	1850	1850	550	2
UK 150	1	1	1850	3470	2793	1850	1850	550	2
UK 175	1	1	2150	3670	2793	2150	2150	550	2
UK 200	1	1	2150	3670	2793	2150	2150	550	2
UK 225	1	1	2350	3870	2793	2350	2350	550	2
UK 250	1	1	2350	3870	2796	2350	2350	550	3
UK 300	2	2	1850	3470	2793	1850	1850	550	2
UK 350	2	2	2150	3670	2793	2150	2150	550	2
UK 400	2	2	2150	3670	2793	2150	2150	550	2
UK 450	2	2	2350	3870	2793	2350	2350	550	2
UK 500	2	2	2350	3870	2796	2350	2350	550	3
UK 600	3	3	2150	3670	2793	2150	2150	550	2
UK 700	3	3	2350	3870	2796	2350	2350	550	3
UK 800	4	4	2150	3670	2793	2150	2150	550	2
UK 900	4	4	2350	3870	2793	2350	2350	550	2
UK 1000	4	4	2350	3870	2796	2350	2350	550	3
UKS 80	1	1	1450	3270	2843	1450	1450		1
UKS 100	1	1	1850	3470	2843	1850	1850		1
UKS 125	1	1	1850	3470	2293	1850	1850	550	2
UKS 150	1	1	1850	3470	2793	1850	1850	550	2
UKS 175	1	1	2150	3670	2793	2150	2150	871	2
UKS 200	1	1	2150	3670	2793	2150	2150	871	2
UKS 225	1	1	2350	3870	2793	2350	2350	921	2
UKS 250	1	1	2350	3870	2796	2350	2350	921	3
UKS 300	2	2	1850	3470	2793	1850	1850	550	2
UKS 350	2	2	2150	3670	2793	2150	2150	871	2
UKS 400	2	2	2150	3670	2793	2150	2150	871	2
UKS 450	2	2	2350	3870	2793	2350	2350	921	2
UKS 500	2	2	2350	3870	2796	2350	2350	921	3
UKS 600	3	3	2150	3670	2793	2150	2150	871	2
UKS 700	3	3	2350	3870	2796	2350	2350	921	3
UKS 800	4	4	2150	3670	2793	2150	2150	871	2
UKS 900	4	4	2350	3870	2793	2350	2350	921	2
UKS 1000	4	4	2350	3870	2796	2350	2350	921	3

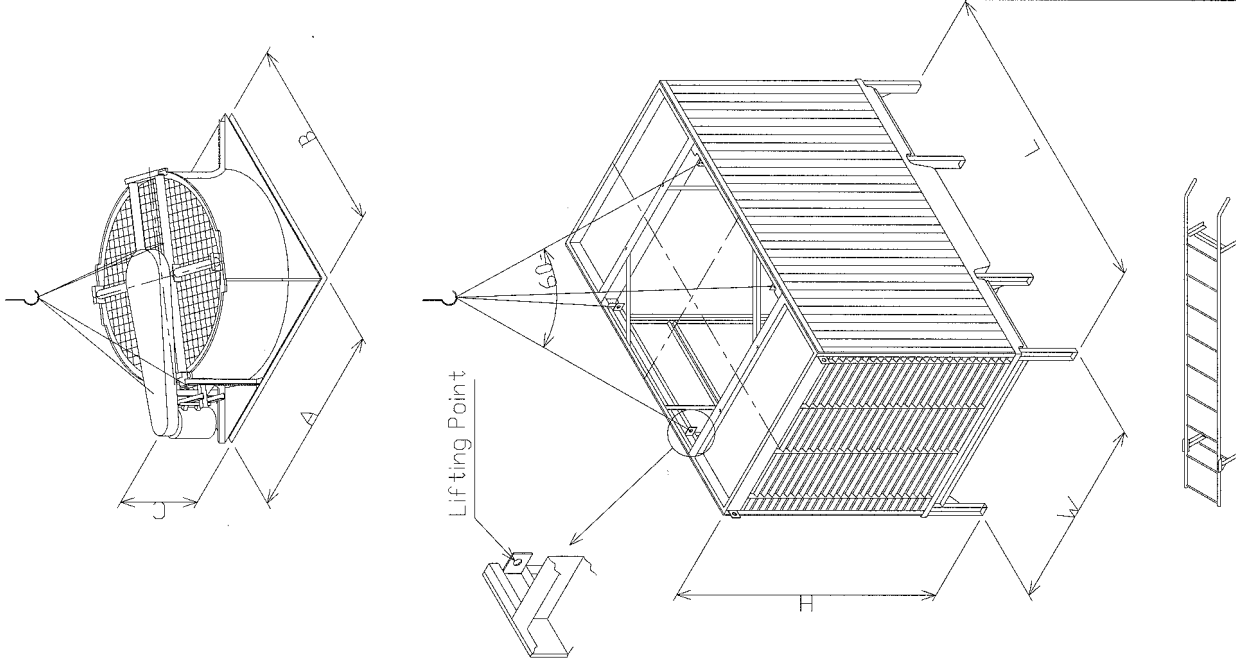
* Note: Design & Conditions are subjected to change by the manufacturer without prior notice.

Note: Dimensions stated above are approximate values. Refer to unit drawing for precise dimension details.

ASSEMBLY TYPE 1

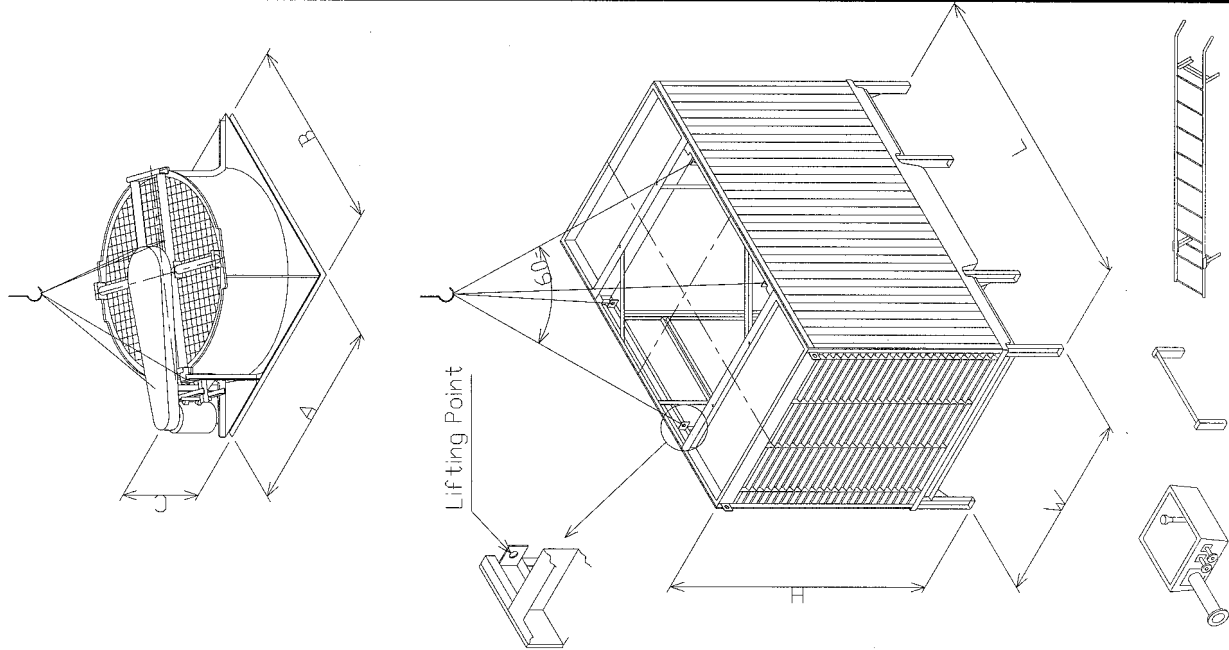


ASSEMBLY TYPE 2



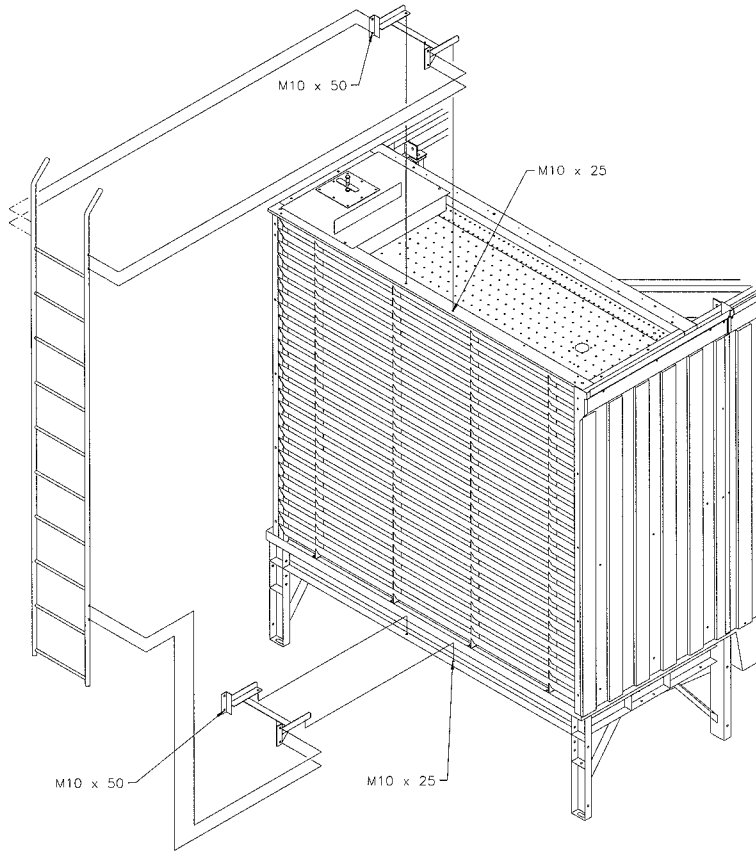
LADDER

ASSEMBLY TYPE 3

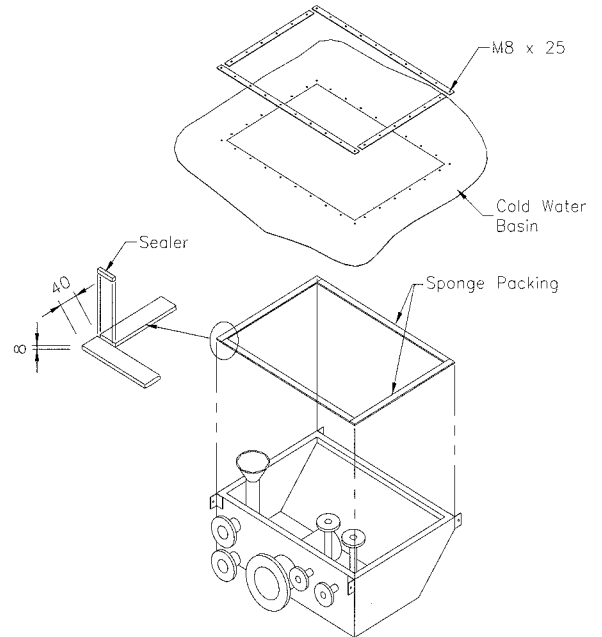
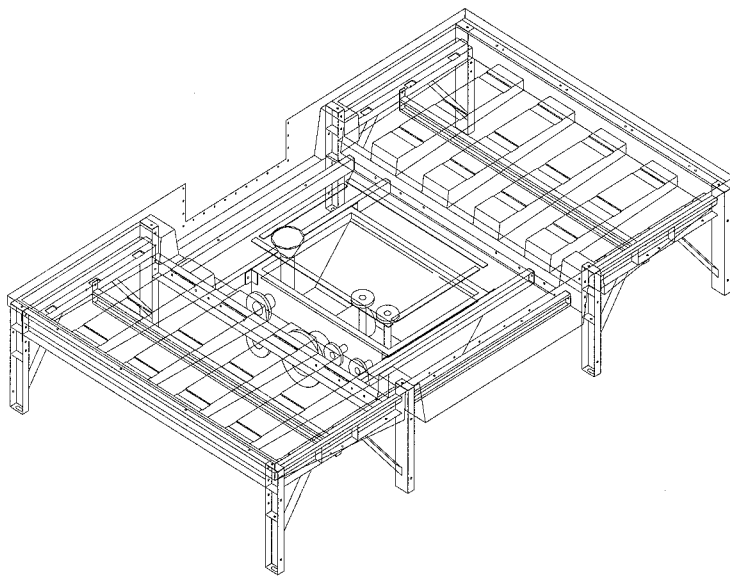


SUMP DETACHABLE LEG
LADDER

LADDER ASSEMBLY



SUMP ASSEMBLY



Before mounting the sump on the frame, make sure the sponge packing is placed at the sump top flange. Ensure that the column mounting bolt holes are concentric and bolt down to the side back plate on top the cold water basin.



For Further Enquiries Please Contact :-
NS COOLING TOWERS SDN BHD (784210-D)
 20 B Jalan Perusahaan, Prai Industrial Estate 4,
 13600 Prai, Penang, Malaysia.
 Tel: +60 4 501 33 22 Fax: +60 4 508 33 55
www.spindle.com.my

